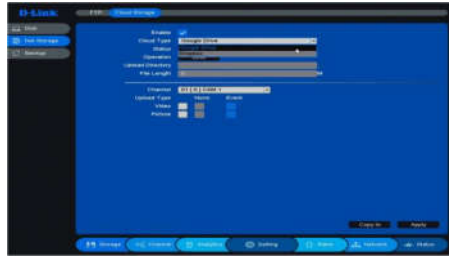

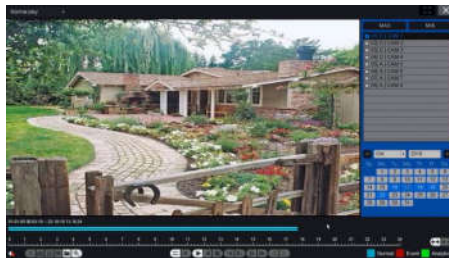


and pictures to the Cloud Storage automatically.



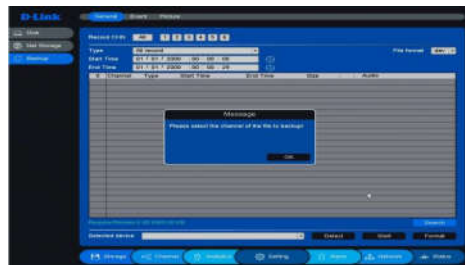
11. Playback

Right click the mouse and enter [Record Playback] here you can select the playback mode on the Top-left of the screen. It supports up to 6 play modes such as: Normal play/ event play/ label play/ Smart play/ Time division play/ Normal play(Picture), select channels and date, then click  to play the records. Control bar is used to play/pause, speed up/slow down, backward/stop, etc. You may clip the record, set a label or lock the file, for more details please refer the User Manual.



12. Backup

Right click the mouse, enter [Main Menu] and choose the option [Backup]. You can backup videos and pictures to external USB driver. Two kinds of file format are available: DAV&AVI. Then detect/select the memory device and start the backup.



For any technical support contact : 1860 233 3999.

Quick Start Guide of NVR

1. Notes

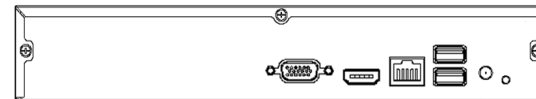
Before using the device, please read the following guide carefully to avoid human injury, device damage, data loss, decrease of the device performance, and other unexpected damages.

2. Front Panel



The front panel is for reference only.

3. Rear Panel



The rear panel is for reference only.

4. HDD Installation

Please turn off the power and then start the installation of HDD. The pictures of the installation are only for reference.



Remove the cover



Fix the HDD



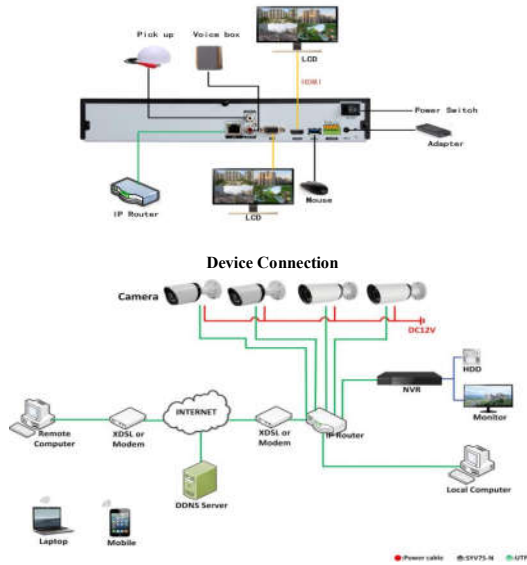
Connect the power and data cables



Install the cover and screws

5. Device and Network Connection

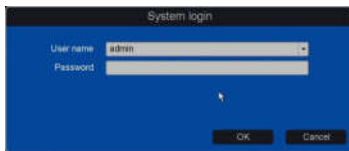
We recommend you to connect NVR with other monitoring devices follow pictures below. Please give power to IP cameras、NVR and other device separately.



Network Connection

6. Start up and Log in

Make sure Hard Disk is connected properly and LAN cable from switch is connected in network port then plug in the power and turn on the power switch on the back panel of NVR. Power supply indicator blinking indicates the video recorder is on work, and then you will hear a beep. When the system login screen loads, it will ask for a username and password, the default username is "admin" and the password is empty as shown below:



7. Network setting

Please "Right Click" -> "Main menu" -> "Setting" -> "Network" to open the network setting interface, here you can change the IP address and DNS as shown in picture below. Please be noted that the IP address of NVR should be in the same network segment as the Router. Here you can assign static IP address & DNS or keep on automatic for the router (DHCP ON) to assign IP address & DNS to the NVR.



8. Add IP cameras

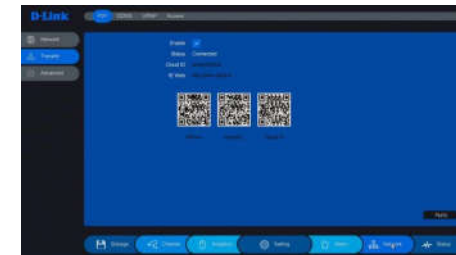
Right click on Preview then click "Main menu" -> "Setting" -> "Channel" -> "IP channel", shown as below:

Here you can scan for available IP cameras in the network & add them to NVR.



9. P2P

Click on "Setting -> Network -> P2P" into the graphical interface. This page shows the iPhone or Android APP download links, and the cloud ID Identification code. Enable the option and it will show the status if connecting to the server successfully. Try to access the IE Web: <http://www.dlink.in> to login the web server and manage the device. You may also download the APP D-LINK Smart CCTV App by scanning the QR-code for respective IOS and Android.



10. Cloud Storage

Click on the "Setting -> Network -> Cloud Storage" into the graphical interface.

Two types of cloud storage are supported: Google Drive and Drop box. Enable the function and choose the one you would like to use and start the binding procedure. You may upload videos