

CCTV Camera

Bullet AHD Camera Quick Set up Guide



Notes : Before providing power for the camera, please read this User Guide in detail!

Do not attempt to disassemble the camera. If the camera can not work, please contact local franchiser or our company.

Franchiser:

For any technical assistance contact 1860 233 3999

■ BRIEF OF PRODUCT

* Sensor (CCD)

Adopt 1/2.9" CMOS Sensor.

* Auto Gain Control (AGC)

Built-in auto gain control (AGC) circuit. The color camera can get high definition picture in low Lux condition.

* Scanning Mode

NTSC or PAL mode.

* Water Resistance

IP66.

This User Guide suits DCS-F2612-L1P product. We adopt the latest CMOS technical of sensor and driver. Fixing and using this model are convenient too. It is very good for you to apply to your CCTV system.

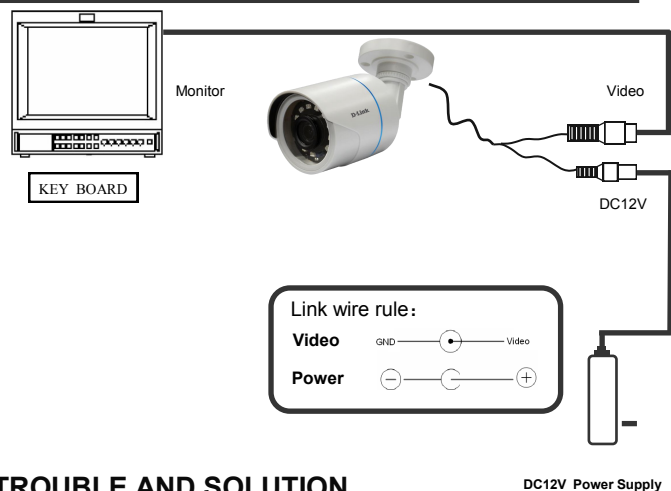
Please read this instruction manual carefully to ensure proper use of the product.



Notes:

- The power supply must through safe attestation. Its output voltage, current, voltage polarity and operating temperature must match the camera's requirement.
- When using the camera in the thunderbolt

■ CONNECTING



TROUBLE AND SOLUTION

1. No Picture after providing power

- . May be the power supply voltage abnormality, please check the power supply voltage and pole whether exactitude.
- . Please check all the connecting cable and monitors whether be connected correctly or not.

2. The picture level direction have flowing interference ripples

- . May be caused by the power supply AC ripples, it need filter the wave of the power supply.

- . Check the monitor and peripheral equipments used.

3. The picture background color changes continuously

- . The fluorescent lamp's electromagnetic field cause color roll. This is proper phenomenon of the cameras.
- . Reduce the fluorescent lamp numbers or increase the distance between the camera and the fluorescent lamps can improve it.
- . Use power supply external sync. camera can solve it.

4. The picture smear too mass

- . The power supply's voltage unstable.
- . Connecting cables not connect correctly or have high impedance.

■ INTRODUCTION

Please read this instruction manual carefully to ensure proper use of the product.. This User Guide suits DCS-F2712-L1P product. We adopt the latest CMOS technical of sensor and driver. Fixing and using this model are convenient too. It is very good for you to apply to your CCTV system.

Please read this instruction manual carefully to ensure proper use of the product.



The symbol is intended to alert the user to the presence of important operating and maintenance (servicing) Instructions in the literature accompanying the appliance.



The symbol is intended to alert the user to the presence of uninsulated 'dangerous voltage' within the product's enclosure that may be of sufficient Magnitude to consti-a risk of electric shock to persons.

	CAUTION: RISK OF ELECTRIC. DO NOT OPEN	
SHOCK CAUTION: TO REDUCE THE RISK OF ELECTRIC DO NOT REMOVE COVER OR BACK NO USER SERVICEABLE PARTS INSIDE. REFER SERVICING		
CAUTION: TO PREVENT ELECTRIC SHOCKS AND RISK OF FIRE HAZARDS, DO NOT USE OTHER THAN SPECIFIED POWER SOURCE.		



Note:

- Please note the camera's operating temperature and its using environment requirement. Avoid using the camera at too high or too low temperatures. The operating temperature is -30~+60□. (Recommendatory operating temperature is -10~+50□.)
- Never make the camera face the sun or bright object. Otherwise, it will damage the CMOS.
- Do not mount the camera near by the radiator or heater.